

STREX™

Fasteners Conversion System

Are you tired of struggling with your boat cover? Fighting with tight fitting covers and painful snaps are a thing of the past with the revolutionary STREX fastener system.

STREX Fasteners work with existing snap covers and can be installed lightning fast without the need for special tools or expertise.

STREX Fasteners offer flexibility and durability, getting more life out of your cover and elevating the boating experience by solving common canvas issues such as:

- Shrunken Covers
- Broken Snaps
- Torn Covers
- Sore Fingers
- Time & Hassle
- Expensive Future Canvas Repairs/Replacements

Treat yourself to the superior experience of the **STREX** system, making the cover application on your new boat a breeze.



Compatibility -Check for:

-Hull snap is screwed (not riveted)

-Placement of hull anchor does not leave gap

-Tension poles are utilized for taut fit

Existing Covers:

The **STREX** Fasteners Conversion Line is an ideal solution for existing covers, allowing continued use even if the canvas has shrunk over time. Say goodbye to poorly fitting covers and frustrating snaps- once converted to **STREX**, those issues are a problem no more. Our innovative canvas solutions help reduce costs with a simple switch of just a few components, keeping your cover out of the repair shop. Your fingers, thumbs, and boating companions will thank you for using **STREX**.

- Avoid expensive repairs, extensions, and cover replacements
- Eliminate cover returns with durable, flexible solutions
- Improve your boating experience and satisfaction
- Invest in an upgrade that can later be applied to a new cover

Install OEM **STREX** on new boat covers using the OEM canvas anchor, or install the **STREX** Conversion System on existing snap covers using the snap canvas anchor button. The rest of the components stay the same!

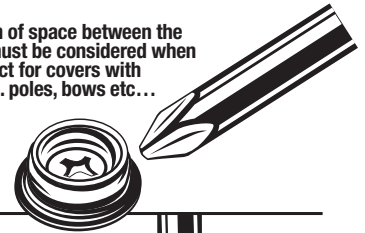


Installation Guide

QUICK INSTALL INSTRUCTIONS

STREX fasteners add an extra inch of space between the original snap and canvas which must be considered when using this product. STREX is perfect for covers with adjustable tensioning systems e.g. poles, bows etc...

Step 1: Using #2 Phillips head screw driver, remove existing male stud from the solid surface (typically the hull or frame of the boat).

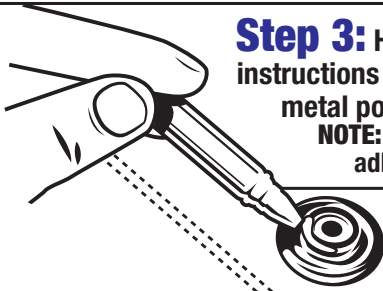


Step 2: Remove the protective cap from the STREX™ anchor knob and using the screw provided replace the male stud (removed in step 1) with the STREX™ anchor knob and tighten. **CAUTION:** Do not overtighten - hand tightening until the knob doesn't rotate is sufficient. Install the protective cap by positioning it over the screw opening and pressing until it clicks into place.

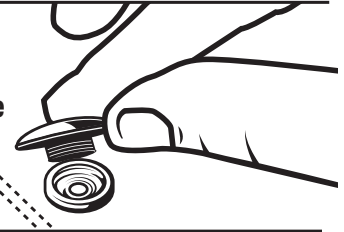


Step 3: Hold the metal snap provided with the post facing up. Follow the instructions on the Vibra-TITE™ adhesive and apply evenly around the neck of the metal post as shown. This step is necessary to keep metal snap securely attached.

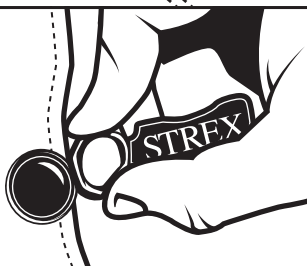
NOTE: Recommend first dry fitting the fastener without the Vibra-TITE™ adhesive before completing step 3 to test canvas fit.



Step 4: Press together the metal snap (from step 3) to the matching canvas snap on the underside of the canvas and let cure for 1-hour.



Step 5: Stretch the top loop of the STREX™ fastener over the metal snap (from step 4) on the underside of the canvas. (small protrusions if provided face away from the canvas).



You're Done!

Now simply stretch the lower loop over the anchor knob.

It's that easy!

WARNING: Never pull a boat on a trailer with the mooring canvas attached to avoid it tearing away and causing a road hazard.



Scan code for installation video



Frequently Asked Questions?

Q What is the rubber pull made of? Will it last in UV?
Does it work in hot or cold temps?

A STREX pulls are made of EPDM (Ethylene Propylene Diene Monomer) which has been used in intense UV applications for decades (think roofing materials and weather stripping in your car.) They are specifically designed to be UV resistant, and unlike the latex you would find in a bungee cord, will not fray and degrade in the sun over time.

EPDM has a working temperature range up to 135 C and maintains its flexibility all the way down to -48 C

Q How strong are they?

A Each STREX pull is designed for 25lbs force per fastener (ex. 4 fasteners equals 100 lbs force.) While strong, they are designed to fail before the canvas does, protecting your canvas from tearing due to stress.

Q What about the potential of slack? Won't covers be baggy with the extra 1" added?

A Simply erect your tension poles to attain the perfect, taut fit

Q What tools do I need to install the STREX Conversion System?

A The only tool needed is a Phillips Head Screwdriver!



STREX fasteners holding strong in freezing temperatures after pontoon boat cover filled with 30 gallons of water and ice.



Contact to Order:

George Tomic

Email: info@bluedreams.ca

Ph: 416.562.4441

StrexFasteners.com